

Wipes Ready® Cutter Thin

Wipes Ready Cutters have 17 teeth, each with multiple serrations to improve material shredding by puncturing and allowing tearing to create a uniform confetti cut that is less susceptible to reweaving with hair and grease. The particle output is designed to be small enough for pumps to easily manage but large enough to be captured by a fine screen at the headworks of the treatment facility.

Knurled Spacers

The knurled surface of the spacer is used exclusively with Wipes Ready Cutters to provide added grip on the material, further improving particle size control by allowing the cutter's perforations to puncture the material during the tearing action created by the differential speed of the shafts.

Cutter Thickness

The original design has a .438-inch thickness for typical applications and a .310-inch thickness for applications requiring a smaller particle for sensitive downstream equipment.

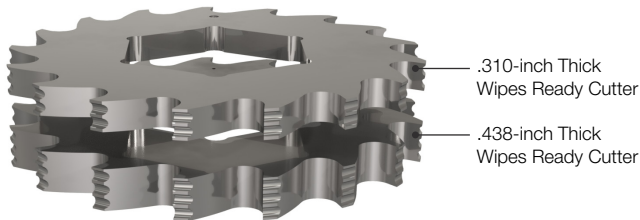


Illustration can be different from drawing.

.438-inch Thick Wipes Ready Cutter

Good choice for open-channel pump station applications where 7-tooth cam cutters were previously installed and the process flow exceeds 10 MGD.

.310-inch Thick Wipes Ready Cutter

Good choice for open-channel and pipeline pump stations where 11-tooth cam cutters were previously installed, the process flow is below 10 MGD, and the pump is sensitive to clogging.

Careful consideration should be given to installations with combined sewers and high grease content. The additional cutter teeth improve cutting performance and thus require higher motor demand. Additionally, heavy grease can adhere to the serrations more than it does with a straight-edge cam cutter.

Using Wipes Ready Cutters with an Auger Monster is not recommended, as the perforated screen will work effectively with traditional cam cutters.

Particle Size

Actual

The actual particle size produced is influenced by the material's resilience and elasticity. Fibrous materials, such as wipes, fabric, and plastic, can stretch and produce longer strips, sometimes even longer than the theoretical size. Wipes Ready Cutters and the knurled spacers combat this by puncturing the resilient material and breaking it into smaller particles. (The action is similar to a tape dispenser. The serrations of the dispenser puncture the tape as it is dragged and stretched across.)

Theoretical

The theoretical particle size is defined as the volume of space created by the tooth profile, the distance between adjacent teeth, and the thickness of the cutter. The theoretical particle provides a general indication of the size of the particle the cutter will produce and should be used as a comparator against other cutter thicknesses and profiles.

TECHNICAL DATA SHEET

Construction Materials

- Heat-treated alloy steel (AISI 4130 or AISI 4140)
- Through hardened to 45-50 Rockwell C
- Thicknesses .438-inch and .310-inch
- Thickness tolerance +.000 / -.001

Product Availability

Wipes Ready Cutters are only available on the selected 2-inch hex product models listed. Models not listed are neither recommended nor available for configuration with Wipes Ready Cutters.

Municipal Models

Muffin Monsters	10K, 30K4T, 30K5
Channel Monsters	CMD-XD2.0, CDD-XD2.0, CMF

Industrial Models

1-HYDRO-C, 1-HYDRO-I, 3-HYDRO-C, 3-HYDRO-IX



800.331.2277 | 949.833.3888 | jwce@jwce.com | www.jwce.com